

Philocomb®

is a gentle and balanced brush for both pets and their owners.

Philocomb® patents are on the parts where **there is a curve in the comb teeth,**



which get thinner toward the tip, with a D-shaped cross-section.

The part for combing out hair does not damage cuticles easily because it is round and thick. Even if a comb tooth tangles with its neighboring teeth, it will go back to the way it was; it is soft and has a high level of performance.

You can take all the hair completely off the comb.

Takes great care of cuticles.



Easy to use, even for children and first-time pet owners.

Philocomb® teeth are soft and the handle is light, so it is difficult to hurt yourself or your pet, but it does not guarantee.

Because the comb teeth are bent widely, you can softly brush hard-to-reach areas like hip bones and joints.

Philocomb® does not use hormone-disrupting chemicals or allergens.



The whole family can sit in a circle and groom their pet.

There is no damage to skin not painful pulling of hair, so pets will be calm.

There are many ways to hold the handle and you can softly brush your pet's hair for as long as you would like without getting tired.

The comb feels good for both pet and owner.

You can even clean up neatly.



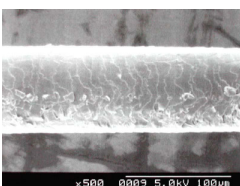
The pocket part of the comb teeth accumulates hair that has been brushed out.

The loose hair will not fly off, so Philocomb® maintains hygiene inside your home.

You can easily remove the accumulated hair and be done.

If you place Philocomb® upright on a table, the table will not get dirty with loose hair.

Philocomb® will not damage your pet's coat.



The comb teeth have a thick cross-section and round shape, so they do not easily damage cuticles.

Even if you use Philocomb® every day, there will be no cut hair or cramps.

(The picture on the left shows the damage to cuticles caused by the pins in slicker brushes.)

Types of Philocomb®



Philocomb® E1 (Soft)
Dimensions: width 8 cm,
height 10 cm, thickness 2 cm;
Weight: 48 g

Philocomb® E1 (Soft)

has wide comb teeth that can be used on rabbits, cats, and all breeds of dogs.

We offer a starter kit for first-time pet owners and children, so you can use Philocomb® with peace of mind.



Philocomb® E2 (Hard)
Dimensions: width 8 cm,
height 10 cm, thickness 2 cm;
Weight: 48 g

Philocomb® E2 (Hard)

powerfully catches loose hair so that it can completely remove hair from breeds such as Akita, Corgis, and Labrador Retriever. Medium-sized dogs and large-sized dogs, with short hair. Philocomb® E2 (Hard) is an especially effective comb for dogs when they are shedding (spitz dogs in particular).

It can powerfully remove loose hair.

For powerful short-haired breeds, Philocomb® E2 (Hard) makes dogs' hair feel good to touch and look glossy.



Philocomb® E3 (Long)
Dimensions: width 8 cm,
height 10 cm, thickness 2 cm;
Weight: 48 g

Philocomb® E3 (Long)

is for long-haired breeds that are difficult to groom, such as rabbits, cats, dogs, and pets who dislike being brushed.

Grooming at home is easy when you are taking great care of the hair of animals like Maine Coon and Golden Retriever.

Philocomb® E3 (Long) is also easy to use with poodle and their strong curls by gently lengthening their hair.

Philocomb® E3 (Long) has a cross-sectional shape with a thickness greater than pin brushes in the parts that touch the coat, so that you can take great care of the cuticles in long-haired animals.

Philocomb® E3 (Long) also does not easily damage long and thin coats, and it decreases hair breakage.

There is a curvature at the end so that it can loosen tangles without pulling and does not harm to your pet.

If you brush gently, the tangles will naturally untangle so that the loose hair can be removed.

Brushes and the Conditions of Cuticles

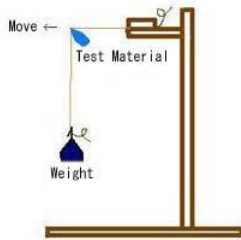
It is said that brushes for pets damage their coats.

It is said that slicker brushes break hair, so if you want to take great care with the hair, then you should use a pin brush.

We looked under an electron microscope to see what happens with pin brushes.

For our test, we fixed the roots of a coat of hair and attached a weight to the tips of the hair.

Halfway through, we exposed the components of the test, made the fixed parts level, and brushed toward the tips of the hair.



We brushed in a direction of easy flow that would not go against the cuticles.

This was photographed with an electron microscope after brushing once.

We saw white powder, coiled, and natural status immediately after the weights were powder, coiling, and curling removed.

What coiled and curled was naturally lengthened.

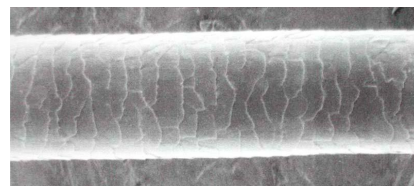
This is the coat of a golden retriever (hair in October).

The electron microscope is the Hitachi Scanning Electron Microscope S-2300.

How the coat was		Weights used							
		3 g		5 g		20 g		30 g	
Shapes of the test components	Edge shape	(2)	A white powder	(3)	A lot of white	--	Failure; it was cut	--	--
	φ0.2 mm	--	No change	--	--	(4)	Coiled	--	Failure; it was cut
	φ0.8 mm	--	No change	--	--	(5)	Curled somewhat	--	Curled
	φ1 mm	--	--	--	--	(6)	No change	--	Curled somewhat
	Comparison and contrast	(1)	Non-treated	--	--	--	--	--	--

(1) Non-treated condition

The coat of a golden retriever.



(3)(Mat breakers, etc.)

Edge shape



Has an edge shape that can be seen in hairballs and barber's clippers. The angle of the cross-section is less than 90 degrees, nearly the same.

Light weight (5 g).

(4) (Slicker brush) ϕ 0.2 mm



Thin wires with a diameter of 0.2 mm.

20 g weight.

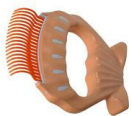
(5) (Pin brush) ϕ 0.8 mm



Wires with 0.8 mm diameter.

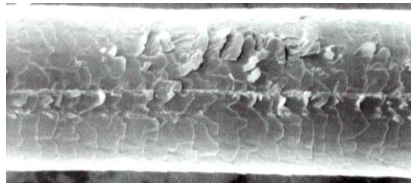
20 g weight.

(6) (Philocomb®) ϕ 1 mm

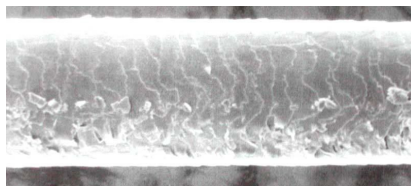


Wires with 1 mm diameter.

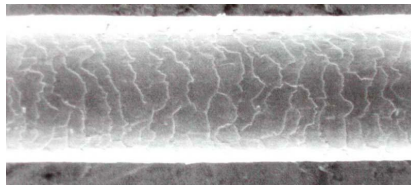
20 g weight.



A white powder appeared on the edge. The cuticles were an unstuck vertical line.



We can see the cuticles standing out, but less damage than with the edge shape.



Cannot see any damage to the hair. Long-haired breeds lost hair with the slicker brush, so we can understand the reason for using pin brushes from this picture.



Cannot see any damage to the hair.

Philocomb® Teeth

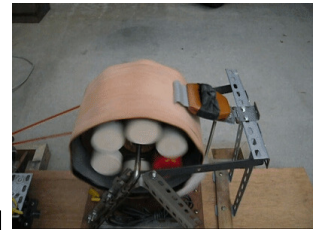


Philocomb® Teeth" border="0">

How we tested durability with ordinary use:
We fitted a 10-cm wool pad (wool mattress)
onto a part of a rotating drum.
The wool pad had a 2.5-cm hair length and
was sheepskin-shaped.



The sheepskin gave a large amount of
resistance when we combed it; combing
required more force than when one is
combing a pet.



The white comb teeth are a different material
for the comparison test.

The rotating drum rotated 140 times every
minute and the pressing force of the comb
teeth was 200 g with a circumferential speed
of 150 cm per second.



A photograph from after the test

The drum rotated 150,000 times.

All but one of the white teeth(PBT) broke off; among the black teeth, no tooth was fractured. The black teeth are what we use for Philocomb®.

We can confirm that **Philocomb® has strong durability**, with no abnormalities occurring after it was used 150,000 times.

The teeth on Philocomb® were selected using advanced technology from engineering and plastics with a special characteristic appropriate for comb teeth.

Philocomb® has a wide curvature and long life.

Philocomb® E series drawbacks

Durability

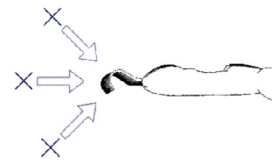
1. Flammable. Keep Philocomb® away from fire.
2. Philocomb® is softer than your pet's teeth, so it will break if chewed on. Do not use Philocomb® as a toy for your pet.
3. Degrades on exposure to ultraviolet rays; do not leave Philocomb® outside. Store it indoors.

Do not put Philocomb® in ultraviolet disinfectant.

4. Philocomb® will melt in high temperatures and deform. When you boil water to disinfect Philocomb® in a pot, the temperature will exceed 200°F. So please make sure to turn off the heat and wait until the water cools down before you, disinfect Philocomb® E.



Philocomb®'s strong direction. In the power of the direction that pulls comb teeth, the teeth will bend and detach, so the comb will not be damaged.



Philocomb®'s weak direction. When you add more force in the direction that represses the comb teeth, the thin comb teeth will be damaged.

(Trademark, patent, design) Registered country of manufacturer: Japan (C) 2009-2018 DIATOLIB LLC

<https://www.diatolib.com/>
